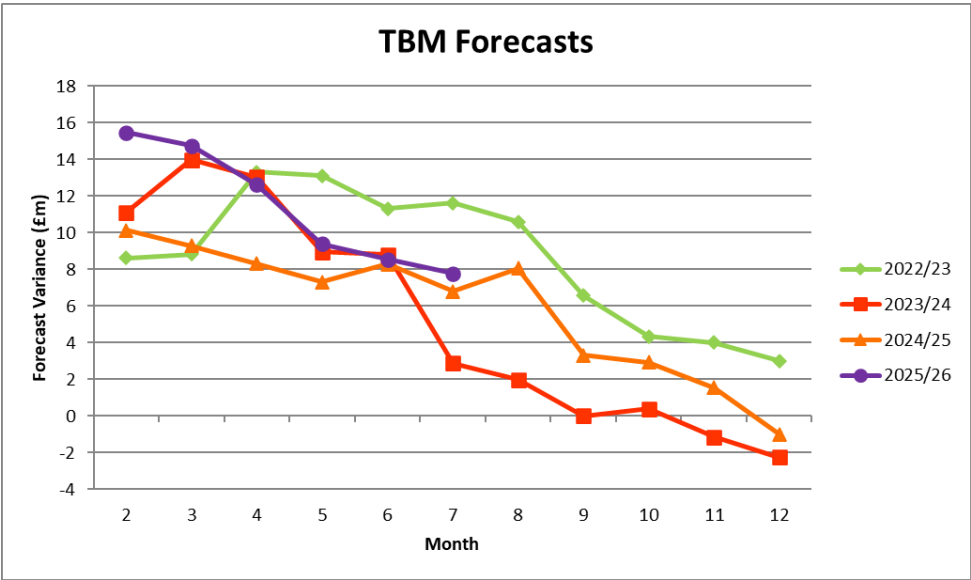




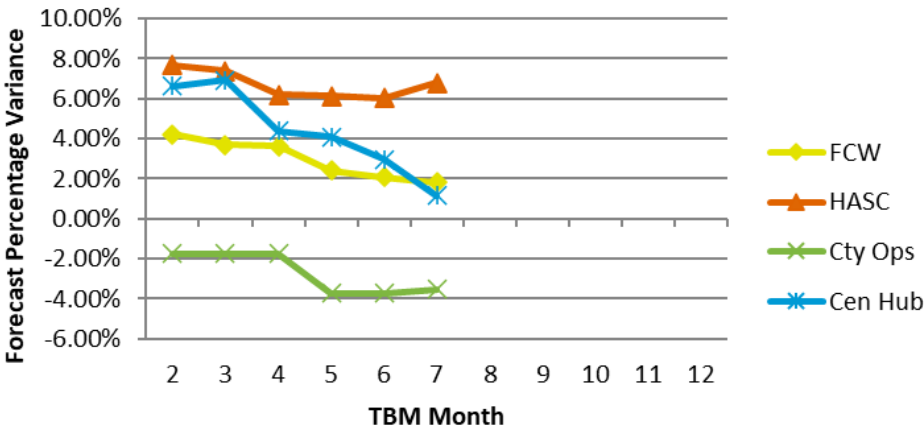
Red = overspent.
Green = Underspent.
Size of bubble indicates scale of under or overspend.
If a directorate is not shown then a break even position is forecast.

Direction of Travel				
Directorate/Fund	Forecast Variance Month 7	Forecast Variance Month 7	Change From Month 5	RAG Rating Month 7
	£'000	%		
General Fund Services:				
Families, Children & Wellbeing	1,445	1.8%	↑	Red
Homes & Adult Social Care	8,232	6.8%	↓	Red
City Operations	(1,793)	-3.5%	=	Green
Central Hub	388	1.2%	↑	Red
Centrally-held Budgets	(496)	-5.6%	↑	Green
Total General Fund	7,776	2.8%	↑	Red
Dedicated Schools Grant (DSG)				
	2,463	362.2%	↑	Red
Housing Revenue Account				
	1,216	0.0%	↓	Red

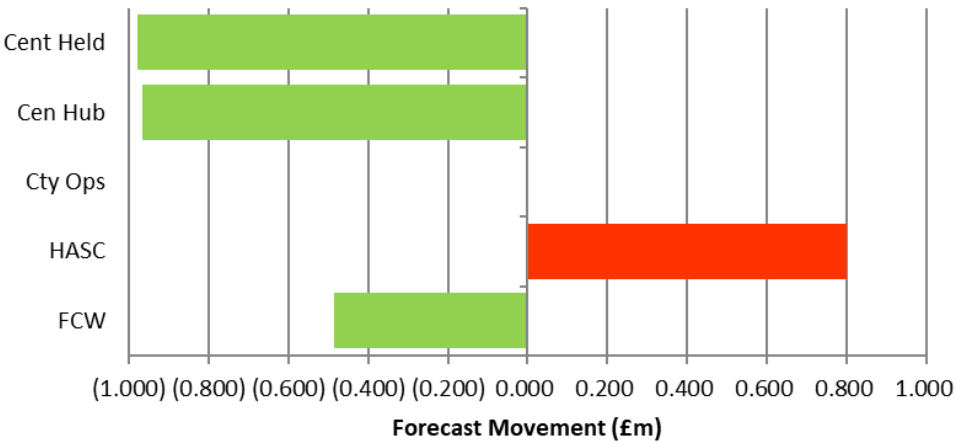
↑ = Improving position, ↓ = Worsening position



Forecast Percentage Variance



TBM Forecast Movement Month 5 to Month 7



Savings Target as a % of TBM Budget



Savings Monitoring

